



Maths-it Podcast H-12

Higher GCSE Revision

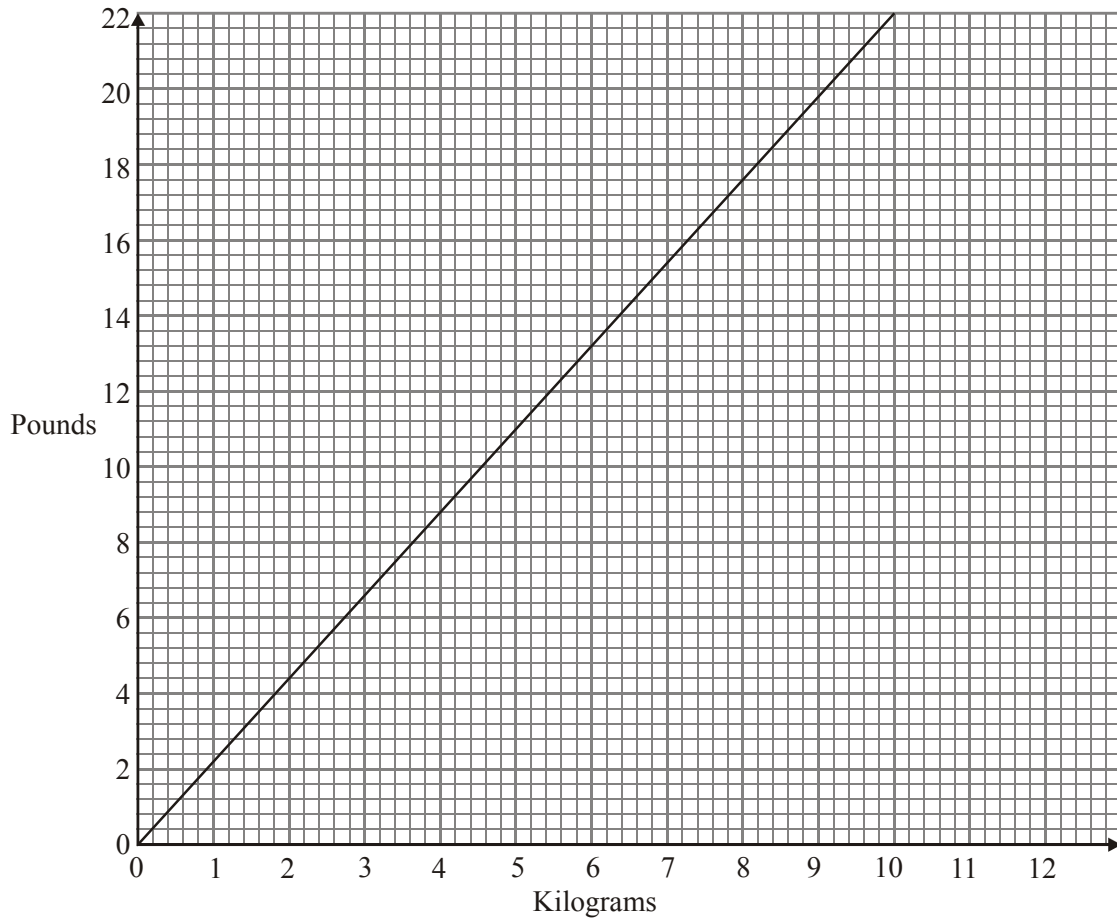
Interpreting graphs

Topics

Real life graphs, plotting and interpreting – Distance time graphs – Conversion graphs

Questions

1.



The conversion graph above can be used for changing between kilograms and pounds.

(a) Use the graph to change 11 pounds to kilograms.

..... kg

(1)

(b) Use the graph to change 7.5 kilograms to pounds.

..... pounds

(1)

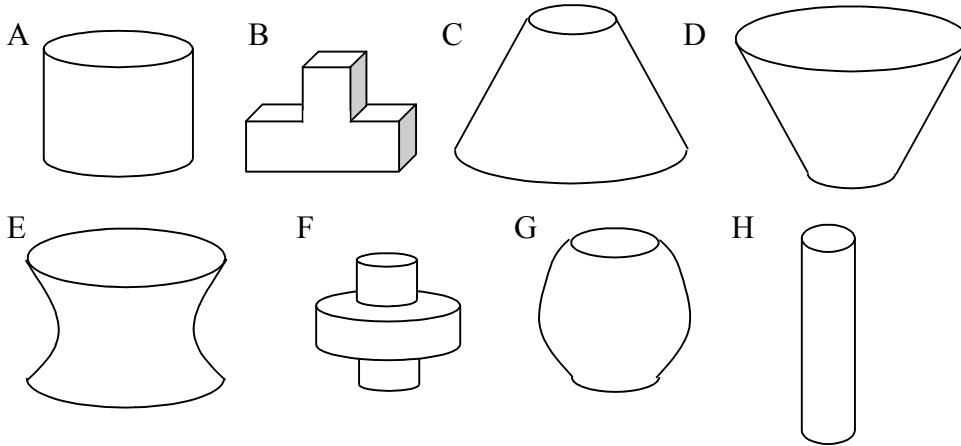
Gianluca weighs 160 pounds.

(c) Change 160 pounds to kilograms.

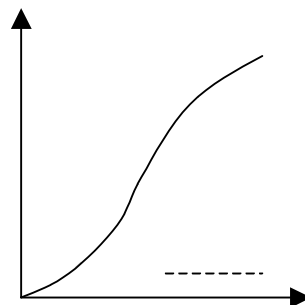
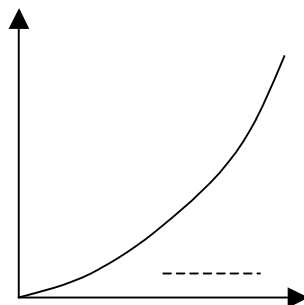
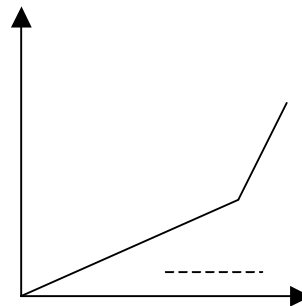
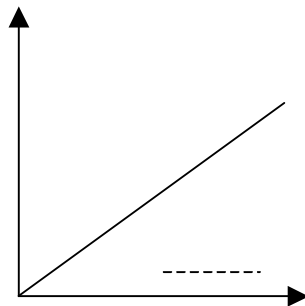
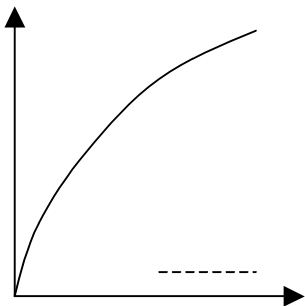
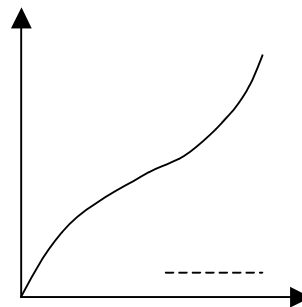
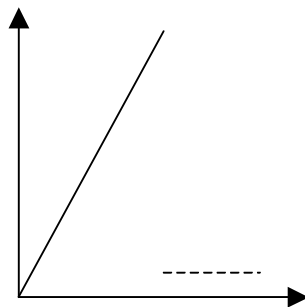
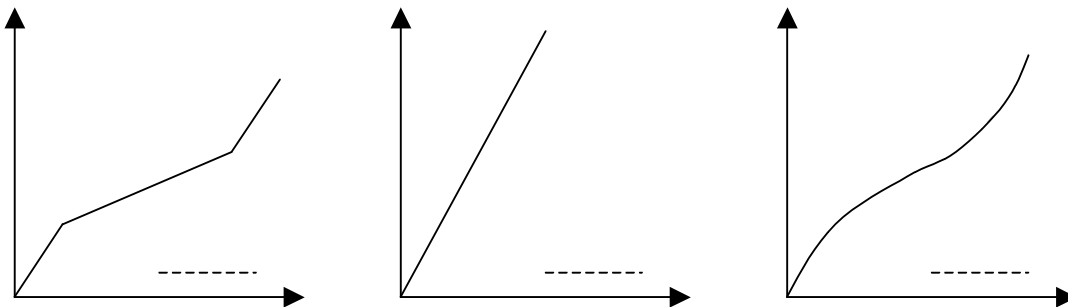
..... kg

(3)
(Total

2. The diagrams below show several differently shaped containers.



Each container is filled from a tap running at a constant rate. The graphs of the height of the water above the base against time are shown below. Write the letter corresponding to the container next to its graph.



(Total 4 marks)

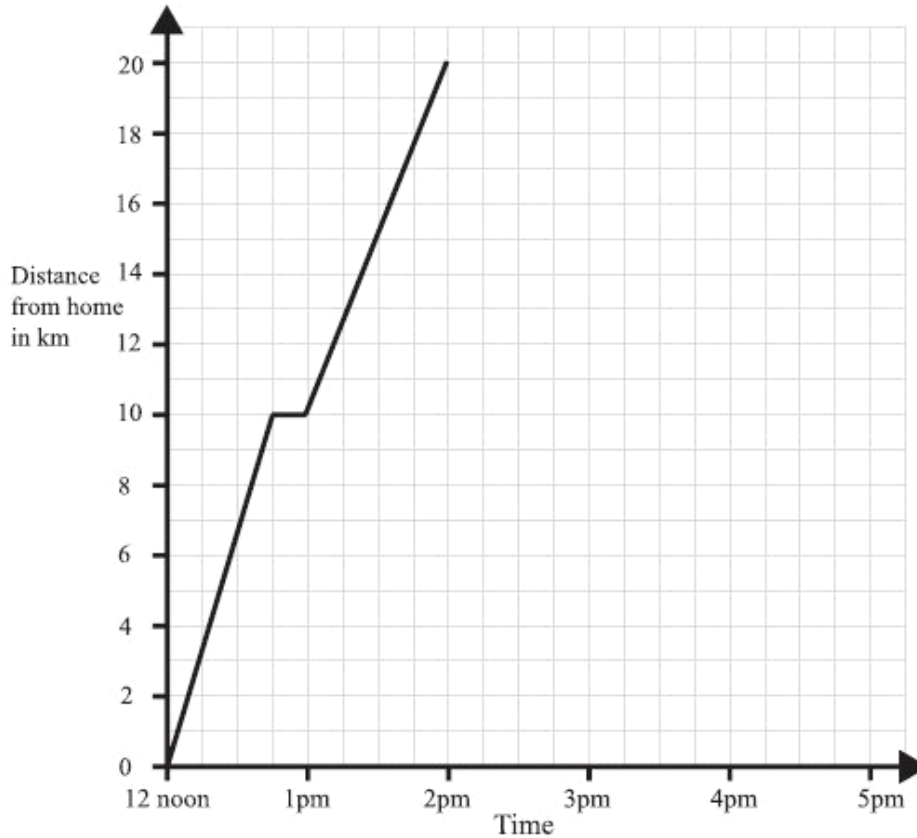


Maths-it Podcast H-12

Higher GCSE Revision

Interpreting graphs

3. A man left home at 12 noon to go for a cycle ride.
The travel graph represents part of the man's journey.



At 12.45pm the man stopped for a rest.

- (a) For how many minutes did he rest?

.....minutes

(1)

- (b) Find his distance from home at 1.30pm.

.....km

(1)

The man stopped for another rest at 2pm.

He rested for one hour.

Then he cycled home at a steady speed. It took him 2 hours.

- (c) Complete the travel graph.

(2)

- (d) At what speed did he travel home?

.....km/h

(2)

(Total 4 marks)



Maths-it Podcast H-12

Higher GCSE Revision

Interpreting graphs